



Andy Beshear  
GOVERNOR

## TRANSPORTATION CABINET

200 Mero Street  
Frankfort, Kentucky 40601

Jim Gray  
SECRETARY

March 23, 2026

CALL NO. 109  
CONTRACT ID NO. 261113  
ADDENDUM # 2

Subject: Jessamine County, FD06 057 1980 000-004  
Letting March 26, 2026

(1) Revised - Plan Sheets - R177, R181, R195, R205, R206, R208, R221

Proposal revisions are available at <http://transportation.ky.gov/Construction-Procurement/>.

If you have any questions, please contact us at 502-564-3500.

Sincerely,

A handwritten signature in black ink that reads "Rachel Mills".

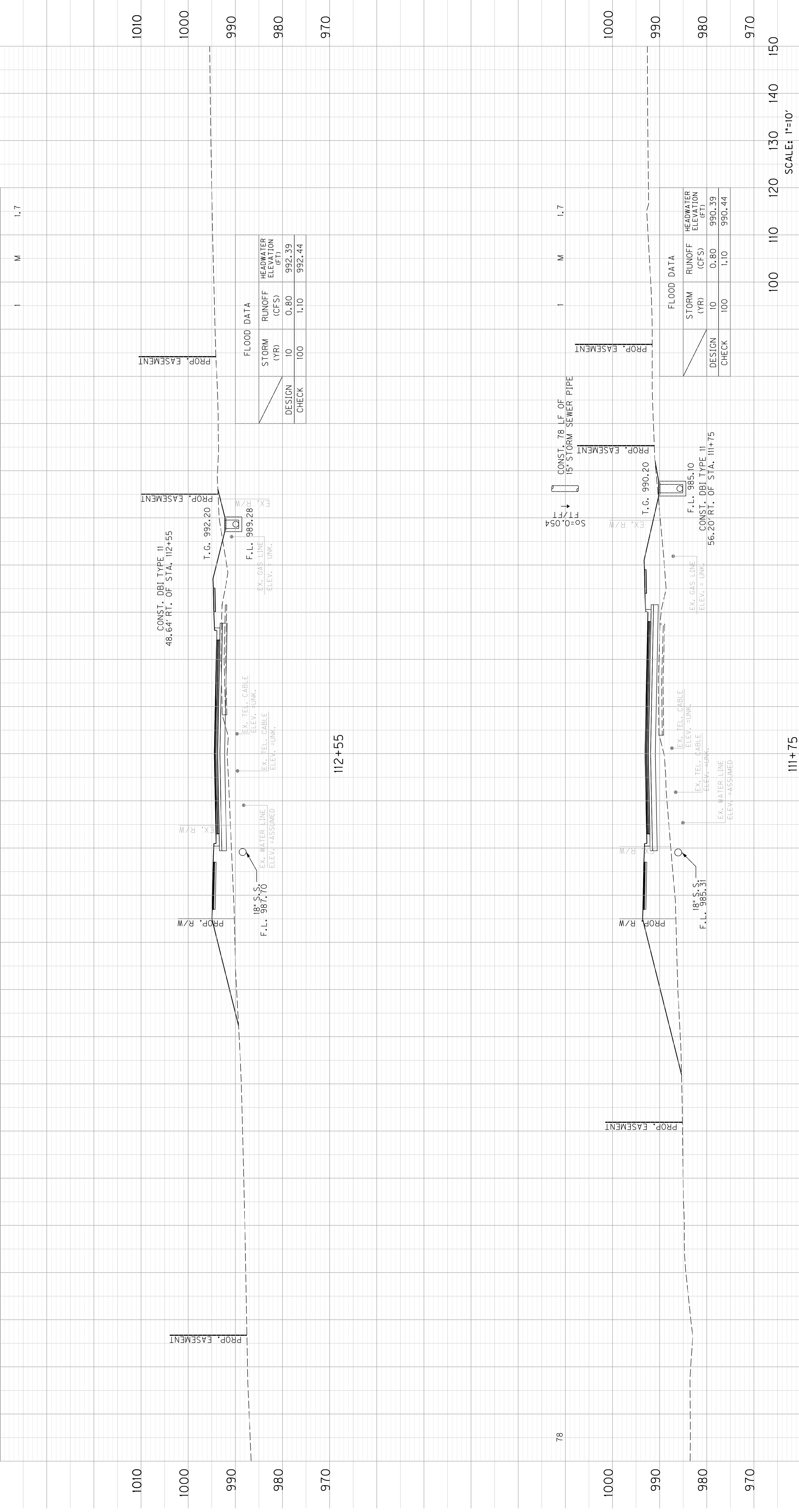
Rachel Mills, P.E.  
Director  
Division of Construction Procurement

RM:mr  
Enclosures

PIPE DRAINAGE SHEET 5 of 51

COUNTY OF	ITEM NO.	SHEET NO.
JESSAMINE	7-414.00	R177

STORM SEWER PIPE		MAX COVER HEIGHT	DESIGN PH LEVEL	DROP BOX INLET TYPE II	DESIGN PH LEVEL	MAX COVER HEIGHT
15"						
L I N E A R F E E T		LF		EACH		
			M	I	M	1.7



FLOOD DATA

DESIGN CHECK	STORM (YR)	RUNOFF (CFS)	HEADWATER ELEVATION (FT)
	100	1.10	992.44
	10	0.80	992.39

FLOOD DATA

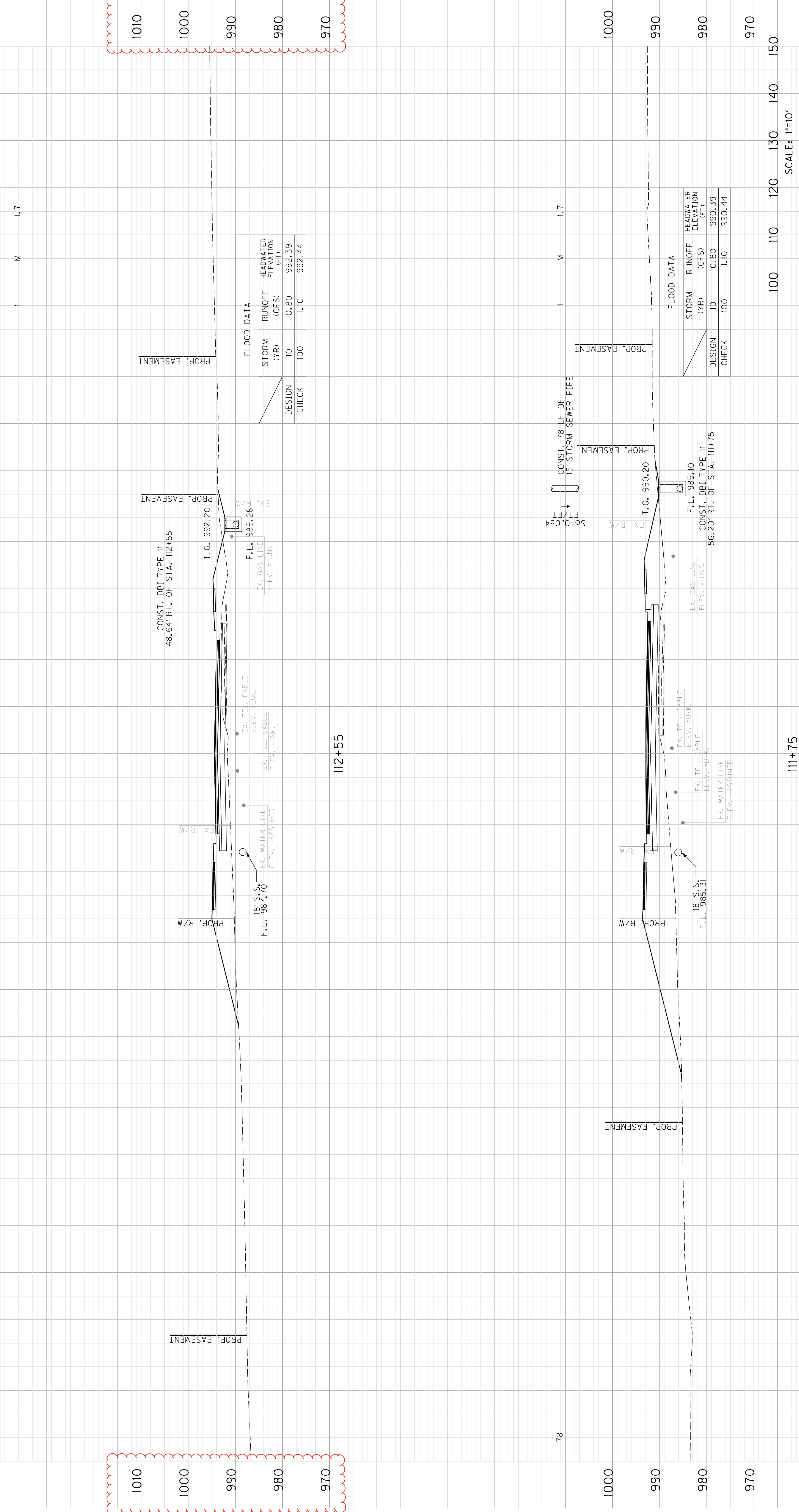
DESIGN CHECK	STORM (YR)	RUNOFF (CFS)	HEADWATER ELEVATION (FT)
	100	1.10	990.44
	10	0.80	990.39

BRANNON ROAD (KY 1980)  
PIPE SHEET  
STA. 111+75 TO STA. 112+55  
SCALE: 1"=10'

PIPE DRAINAGE SHEET 5 of 51

COUNTY OF	ITEM NO.	SHEET NO.
JESSAMINE	7-414.00	R177

STORM SEWER PIPE		MAX COVER HEIGHT	DESIGN PH LEVEL	DROP BOX INLET TYPE II	DESIGN PH LEVEL	MAX COVER HEIGHT
15"						
L I N E A R F E E T				EACH		LF
				I	M	1.7



1010
1000
990
980
970

1010
1000
990
980
970

FLOOD DATA

DESIGN CHECK	100	1.10	992.39
DESIGN CHECK	100	1.10	992.44

FLOOD DATA

DESIGN CHECK	10	0.80	990.39
DESIGN CHECK	100	1.10	990.44

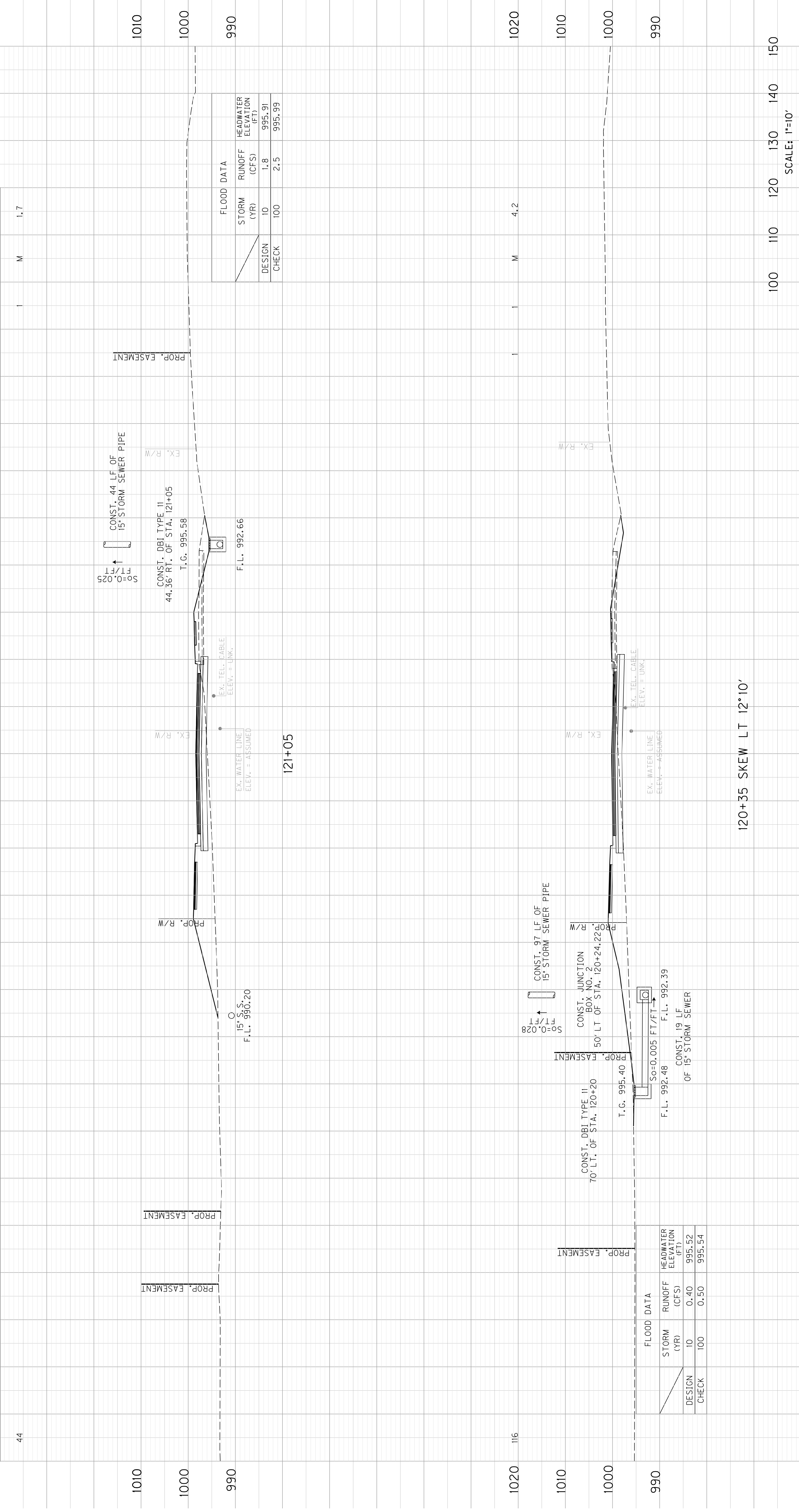
BRANNON ROAD (KY 1980)  
PIPE SHEET  
STA. 111+75 TO STA. 112+55

SCALE: 1"=10'

PIPE DRAINAGE SHEET 9 of 51

COUNTY OF	ITEM NO.	SHEET NO.
JESSAMINE	7-414-00	R181

STORM SEWER PIPE		MAX COVER HEIGHT	DESIGN PH LEVEL	DROP BOX INLET TY. II	JUNCTION BOX - 24"	EACH	LF
15"							
<b>L I N E A R F E E T</b>							
44							1.7



FLOOD DATA		
STORM (YR)	RUNOFF (CFS)	HEADWATER ELEVATION (FT)
DESIGN 10	1.8	995.91
CHECK 100	2.5	995.99

FLOOD DATA		
STORM (YR)	RUNOFF (CFS)	HEADWATER ELEVATION (FT)
DESIGN 10	0.40	995.52
CHECK 100	0.50	995.54

120+35 SKEW LT 12°10'

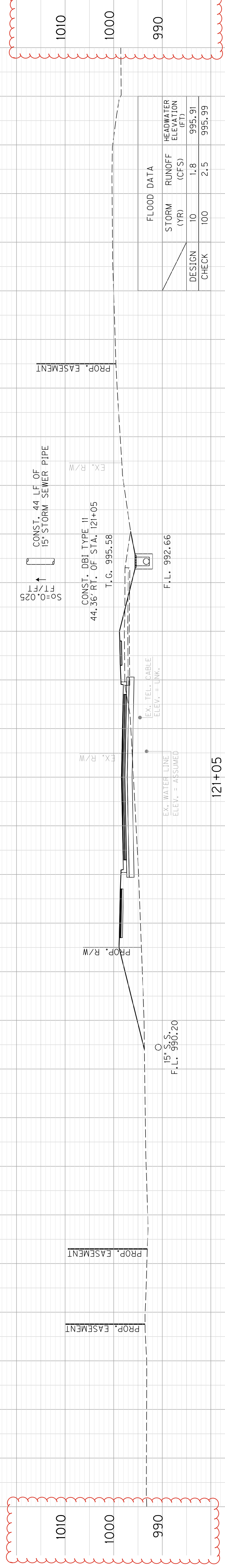
100 110 120 130 140 150  
SCALE: 1"=10'

BRANNON ROAD (KY 1980)  
PIPE SHEET  
STA. 120+35 TO STA. 121+05

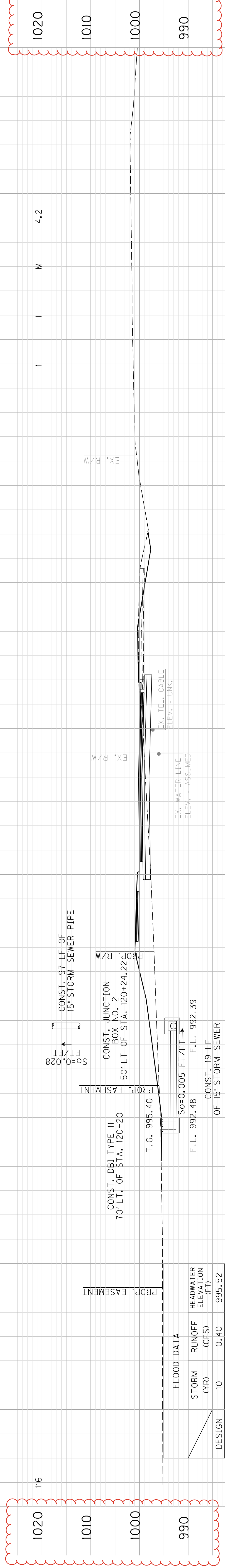
PIPE DRAINAGE SHEET 9 of 51

COUNTY OF	ITEM NO.	SHEET NO.
JESSAMINE	7-414-00	R181

STORM SEWER PIPE		MAX COVER HEIGHT	DESIGN PH LEVEL	DROP BOX INLET TY. II	JUNCTION BOX - 24"	EACH	LF
15"							
<b>L I N E A R F E E T</b>							
44							1.7



FLOOD DATA		
STORM (YR)	RUNOFF (CFS)	HEADWATER ELEVATION (FT)
DESIGN 10	1.8	995.91
CHECK 100	2.5	995.99



FLOOD DATA		
STORM (YR)	RUNOFF (CFS)	HEADWATER ELEVATION (FT)
DESIGN 10	0.40	995.52
CHECK 100	0.50	995.54

1010	1000	990
------	------	-----

1020	1010	1000	990
------	------	------	-----

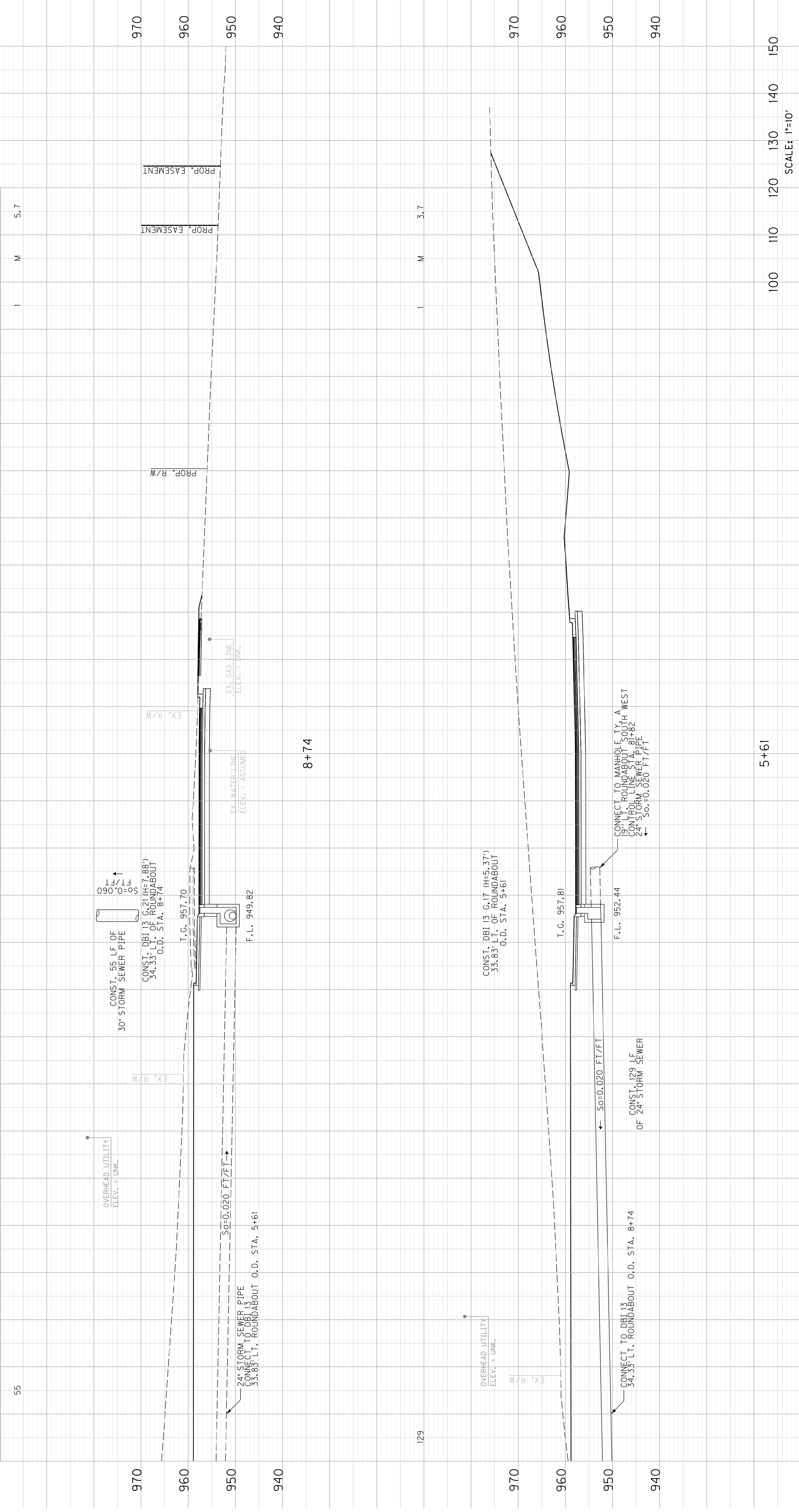
100 110 120 130 140 150  
SCALE: 1"=10'

BRANNON ROAD (KY 1980)  
PIPE SHEET  
STA. 120+35 TO STA. 121+05

PIPE DRAINAGE SHEET 23 of 51

COUNTY OF	ITEM NO.	SHEET NO.
JESSAMINE	7-414-00	R195

STORM SEWER PIPE		MAX COVER HEIGHT	DESIGN PH LEVEL	DROB BOX INLET TYPE	LF
24"	30"				
L I N E A R F E E T				EACH	
55			M	I	5.7

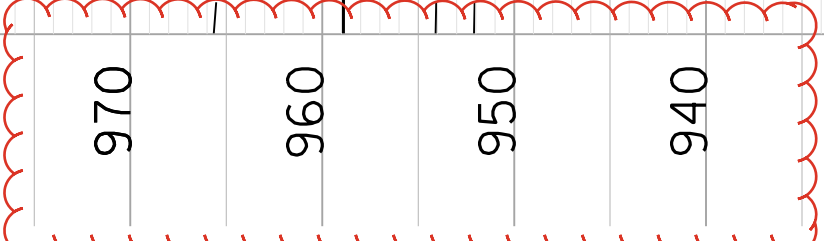
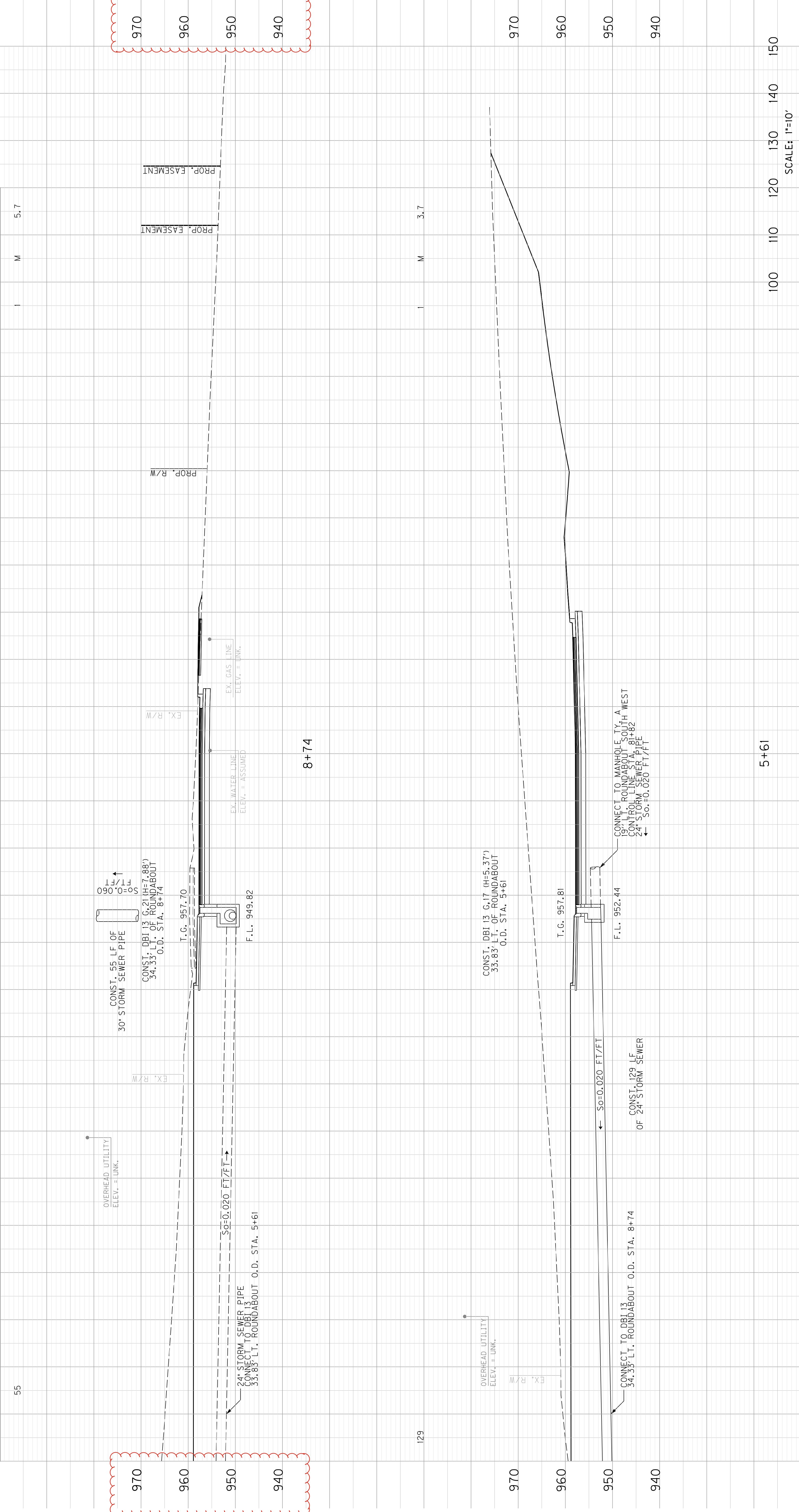


SCALE: 1"=10'	100	110	120	130	140	150
ROUNDABOUT PIPE SHEET STA. 5+61 TO STA. 8+74						

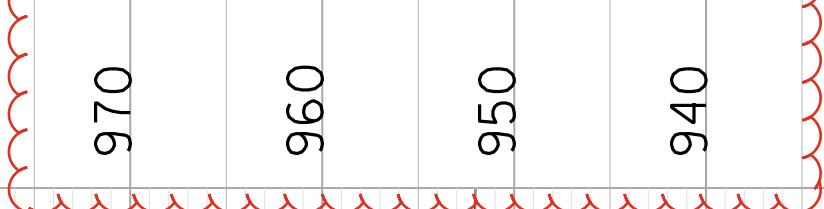
PIPE DRAINAGE SHEET 23 of 51

COUNTY OF	ITEM NO.	SHEET NO.
JESSAMINE	7-414.00	R195

STORM SEWER PIPE		MAX COVER HEIGHT	DESIGN PH LEVEL	DROB BOX INLET TYPE	LF
24"	30"			13C	
L I N E A R F E E T				EACH	
	55		M	I	5.7



129

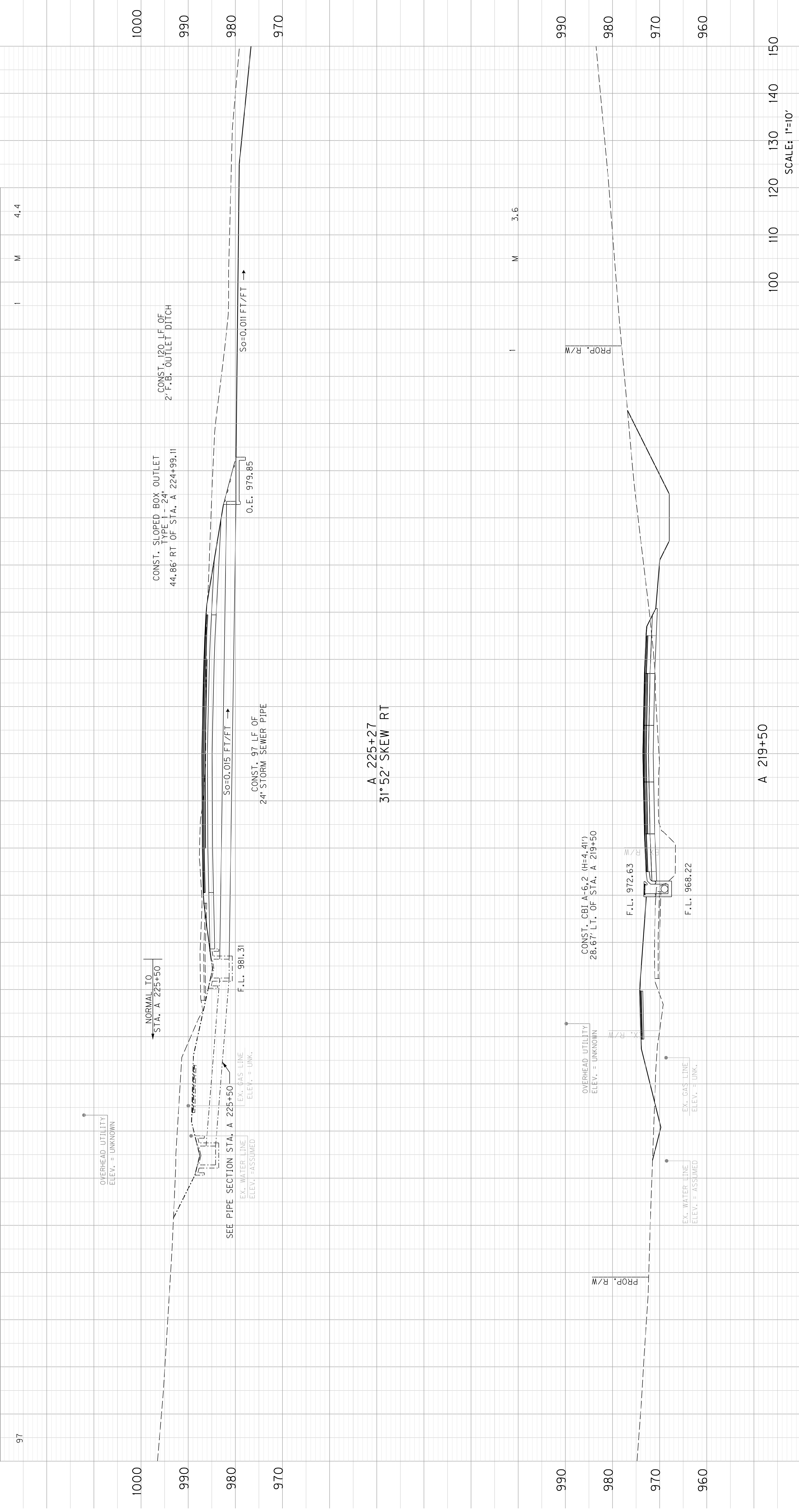


ROUNDABOUT PIPE SHEET STA. 5+61 TO STA. 8+74 SCALE: 1"=10'

PIPE DRAINAGE SHEET 33 of 51

COUNTY OF	ITEM NO.	SHEET NO.
JESSAMINE	7-414.00	R205

STORM SEWER PIPE		SLOPED BOX OUTLET TYPE 1 - 24"	CURB BOX INLET TYPE A	DESIGN PH LEVEL	MAX COVER HEIGHT
LINE	FEET				
97	24"	1	EACH	M	4.4



1000	990	980	970	960	100	110	120	130	140	150
------	-----	-----	-----	-----	-----	-----	-----	-----	-----	-----

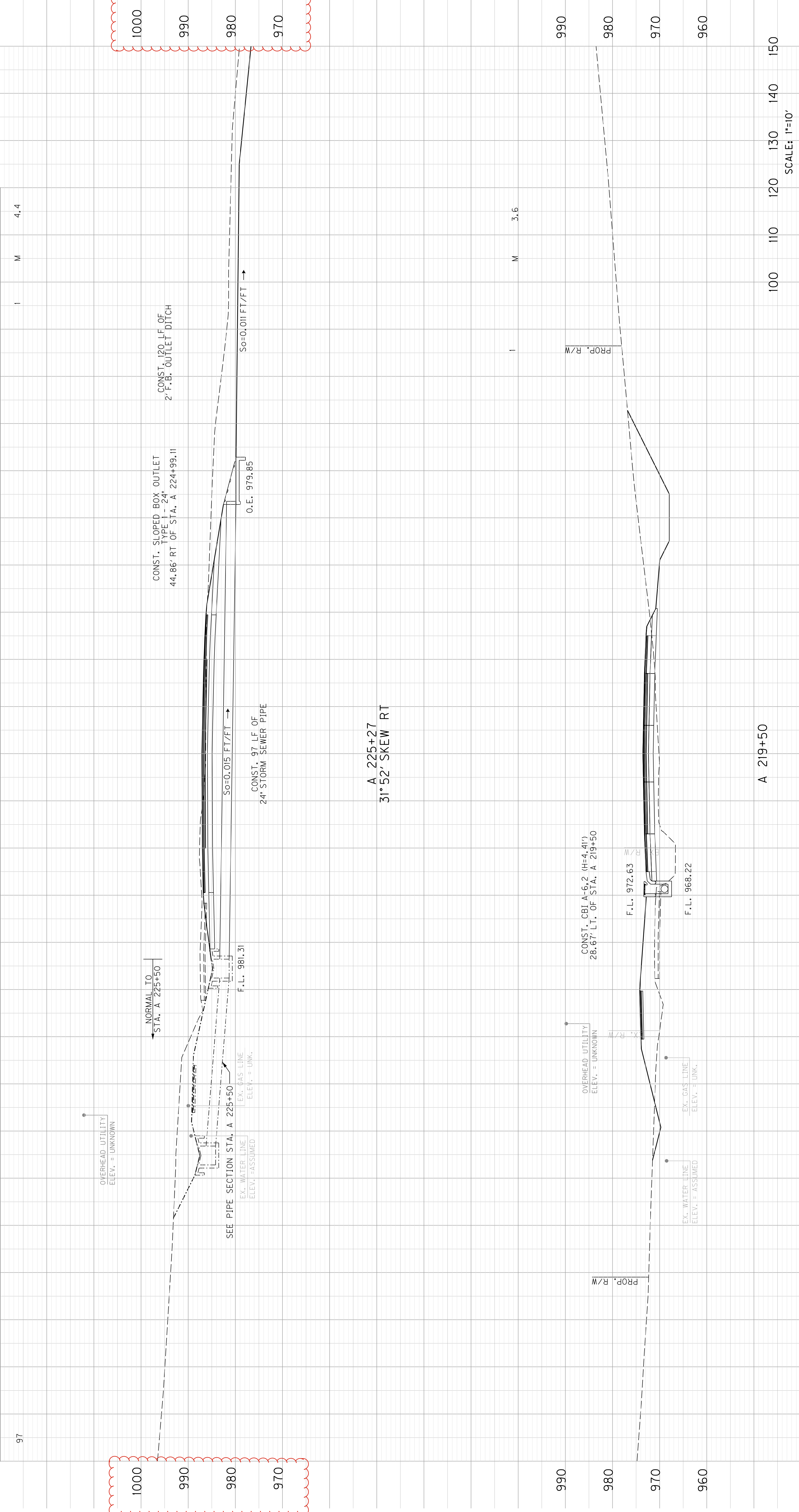
SCALE: 1"=10'

BRANNON ROAD (KY 1980)  
PIPE SHEET  
STA. A 219+50 TO STA. A 225+27

PIPE DRAINAGE SHEET 33 of 51

COUNTY OF	ITEM NO.	SHEET NO.
JESSAMINE	7-414.00	R205

STORM SEWER PIPE		SLOPED BOX OUTLET TYPE 1 - 24"	CURB BOX INLET TYPE A	DESIGN PH LEVEL	MAX COVER HEIGHT
LINE	FEET				
24"					
97		1	EACH	M	4.4



1000  
990  
980  
970

990  
980  
970  
960

100 110 120 130 140 150  
SCALE: 1"=10'

BRANNON ROAD (KY 1980)  
PIPE SHEET  
STA. A 219+50 TO STA. A 225+27

PIPE DRAINAGE SHEET 34 of 51

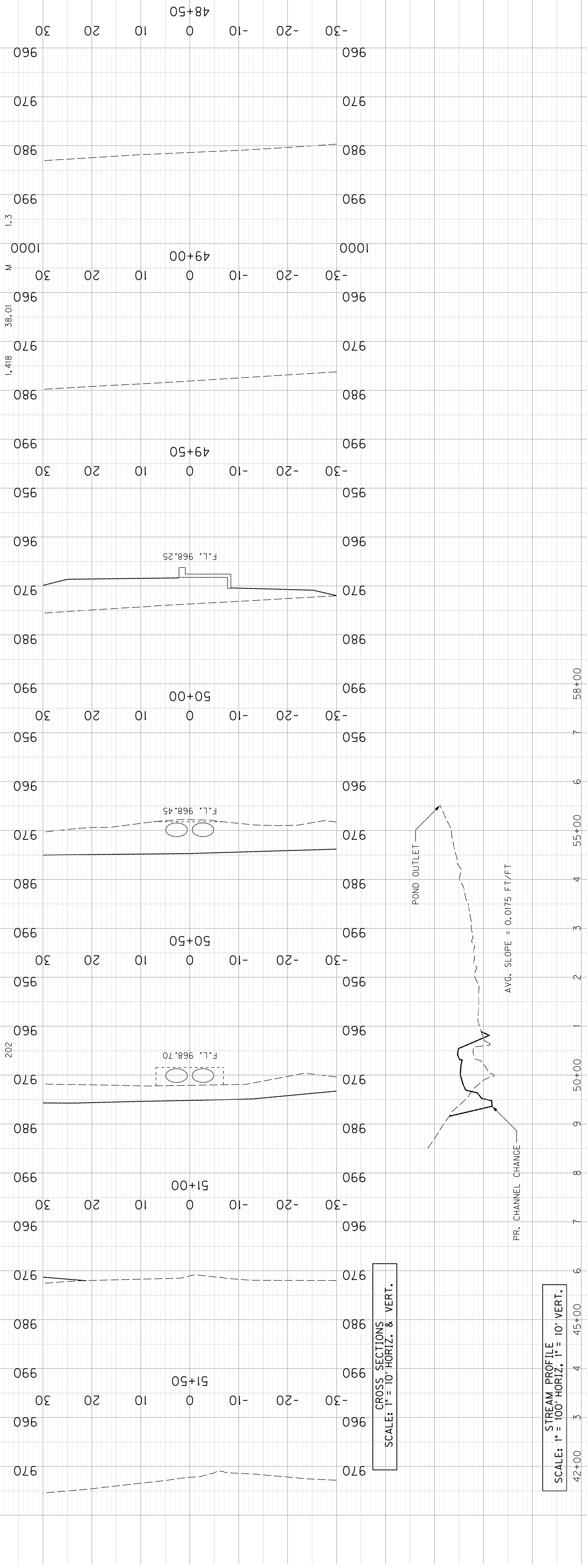
COUNTY OF  
**JESSAMINE**

ITEM NO.  
**7-414.00**

SHEET NO.  
**R206**

**STORM SEWER PIPE**

<b>L I N E A R F E E T</b>	CULVERT PIPE	LF	MAX COVER HEIGHT	LF
	42" EQUIV.	202	DESIGN PH LEVEL	1.3
			CONC. CLASS	CUYD
			A	38.01
			STEEL REINF.	LBS
				1,418



RETURN PERIOD (YR)	25	100	161.9	973.16	9.38
RUNOFF (CFS)	143.0	972.62	973.64		
HEADWATER ELEVATION (FT)					
OUTLET VELOCITY (FPS)					9.14
DRAINAGE AREA = 83.48 ACRES					

CONST. 30" SKEW PIPE CULVERT HEADWALL DOUBLE 42" EQUIV. 30.96' RT. OF STA. A 219+82.21 SEE STRUCTURES PLANS SHEET 206A, 206B, & 206C.

CONST. 30" SKEW PIPE CULVERT HEADWALL DOUBLE 42" EQUIV. 55.25' LT. OF STA. A 220+32 SEE STRUCTURES PLANS SHEET 206A, 206B, & 206C.

OVERHEAD UTILITY ELEV. = UNKNOWN

EX. GAS LINE ELEV. = UNK.

EX. WATER LINE ELEV. = ASSUMED

I.E. 968.77

PHASE J CONST. JOINT INT. ANCHOR REQ.

CONST. 101 LF OF DOUBLE 42" EQUIV. CULVERT PIPE 30° SKEW RT

SO=0.005 FT/FT

FLOWABLE FILL

1.0' ABOVE EXISTING 0100 HEADWATER BASIS FOR AHW

ALLOWABLE HEADWATER (FT) = 973.64

DESIGN CHECK

1.00

161.9

972.62

973.16

9.38

9.14

973.64

973.64

973.64

973.64

973.64

973.64

973.64

973.64

973.64

973.64

973.64

973.64

973.64

973.64

973.64

973.64

973.64

973.64

973.64

973.64

973.64

973.64

973.64

973.64

973.64

973.64

973.64

973.64

973.64

973.64

973.64

973.64

973.64

973.64

973.64

973.64

973.64

973.64

973.64

973.64

973.64

973.64

973.64

973.64

973.64

973.64

973.64

973.64

973.64

973.64

973.64

973.64

973.64

973.64

973.64

973.64

973.64

973.64

973.64

973.64

973.64

973.64

973.64

973.64

973.64

973.64

973.64

973.64

973.64

973.64

973.64

973.64

973.64

973.64

973.64

973.64

973.64

973.64

973.64

973.64

973.64

973.64

973.64

973.64

973.64

973.64

973.64

973.64

973.64

973.64

973.64

973.64

973.64

973.64

973.64

973.64

973.64

973.64

973.64

973.64

973.64

973.64

973.64

973.64

973.64

973.64

973.64

973.64

973.64

973.64

973.64

973.64

973.64

973.64

973.64

973.64

973.64

973.64

973.64

973.64

973.64

973.64

973.64

973.64

973.64

973.64

973.64

973.64

973.64

973.64

973.64

973.64

973.64

973.64

973.64

973.64

973.64

973.64

973.64

973.64

973.64

973.64

973.64

973.64

973.64

973.64

973.64

973.64

973.64

973.64

973.64

973.64

973.64

973.64

973.64

973.64

973.64

973.64

973.64

973.64

973.64

973.64

973.64

973.64

973.64

973.64

973.64

973.64

973.64

973.64

973.64

973.64

973.64

973.64

973.64

973.64

973.64

973.64

973.64

973.64

973.64

973.64

973.64

973.64

973.64

973.64

973.64

973.64

973.64

973.64

973.64

973.64

973.64

973.64

973.64

973.64

973.64

973.64

973.64

973.64

973.64

973.64

973.64

973.64

973.64

973.64

973.64

973.64

973.64

973.64

973.64

973.64

973.64

973.64

973.64

BRANNON ROAD (KY 1980)  
SITUATION SURVEY SHEET  
STA. A 220+00

SCALE: 1"=10' 48+50

PR. CHANNEL CHANGE

0.E. 968.27

50+50

50+50

51+00

970

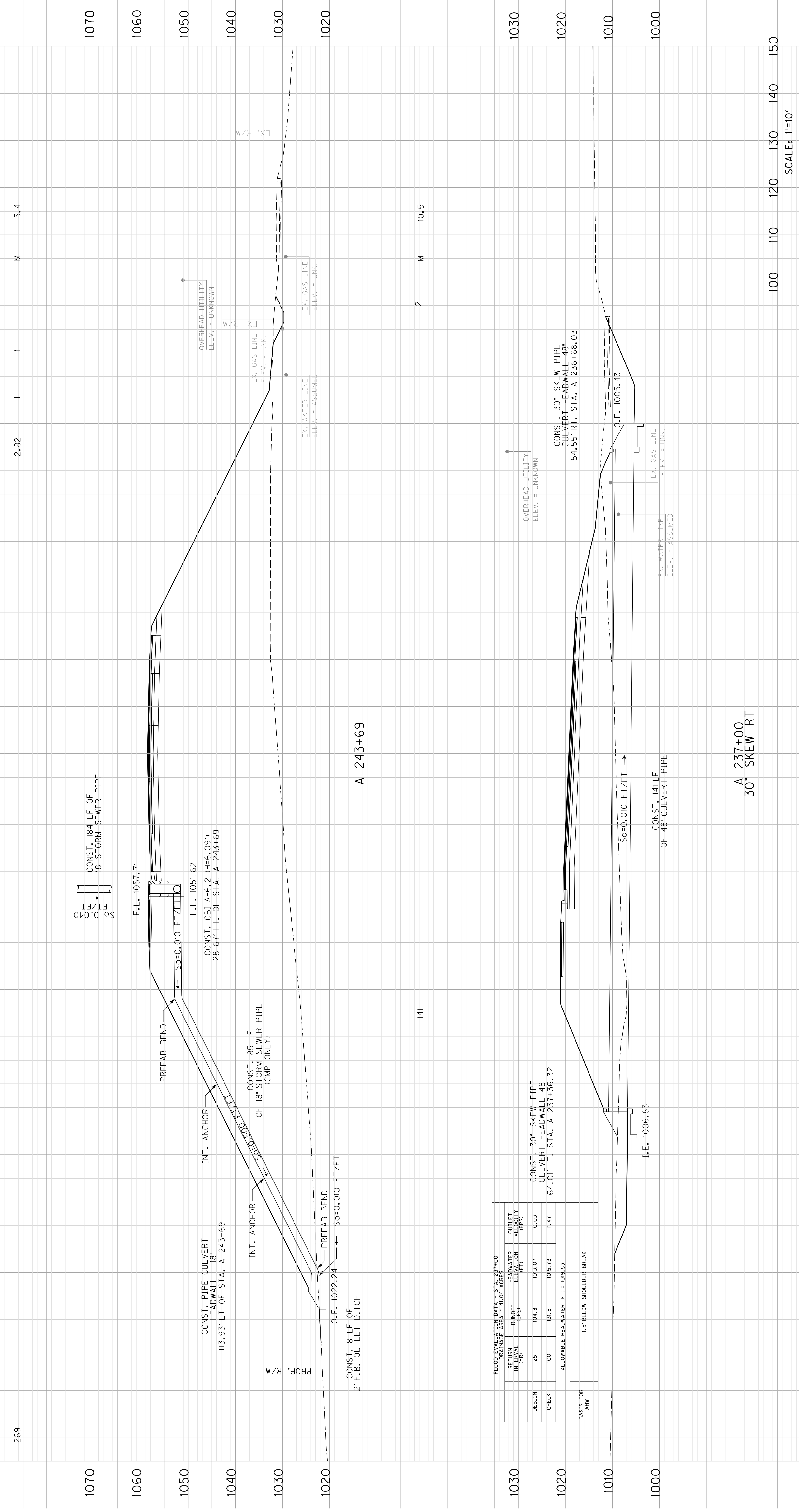
980



PIPE DRAINAGE SHEET 36 of 51

COUNTY OF	ITEM NO.	SHEET NO.
JESSAMINE	7-414.00	R208

STORM SEWER PIPE		CULVERT PIPE	L I N E A R F E E T		CONC. CLASS	CURB BOX INLET TYPE	PIPE CULVERT HEADWALL	PIPE CULVERT HEADWALL	DESIGN PH LEVEL	MAX COVER HEIGHT
18"		48"			CY	EACH	EACH	EACH	M	LF
			269		2.82	1	1	1	5.4	

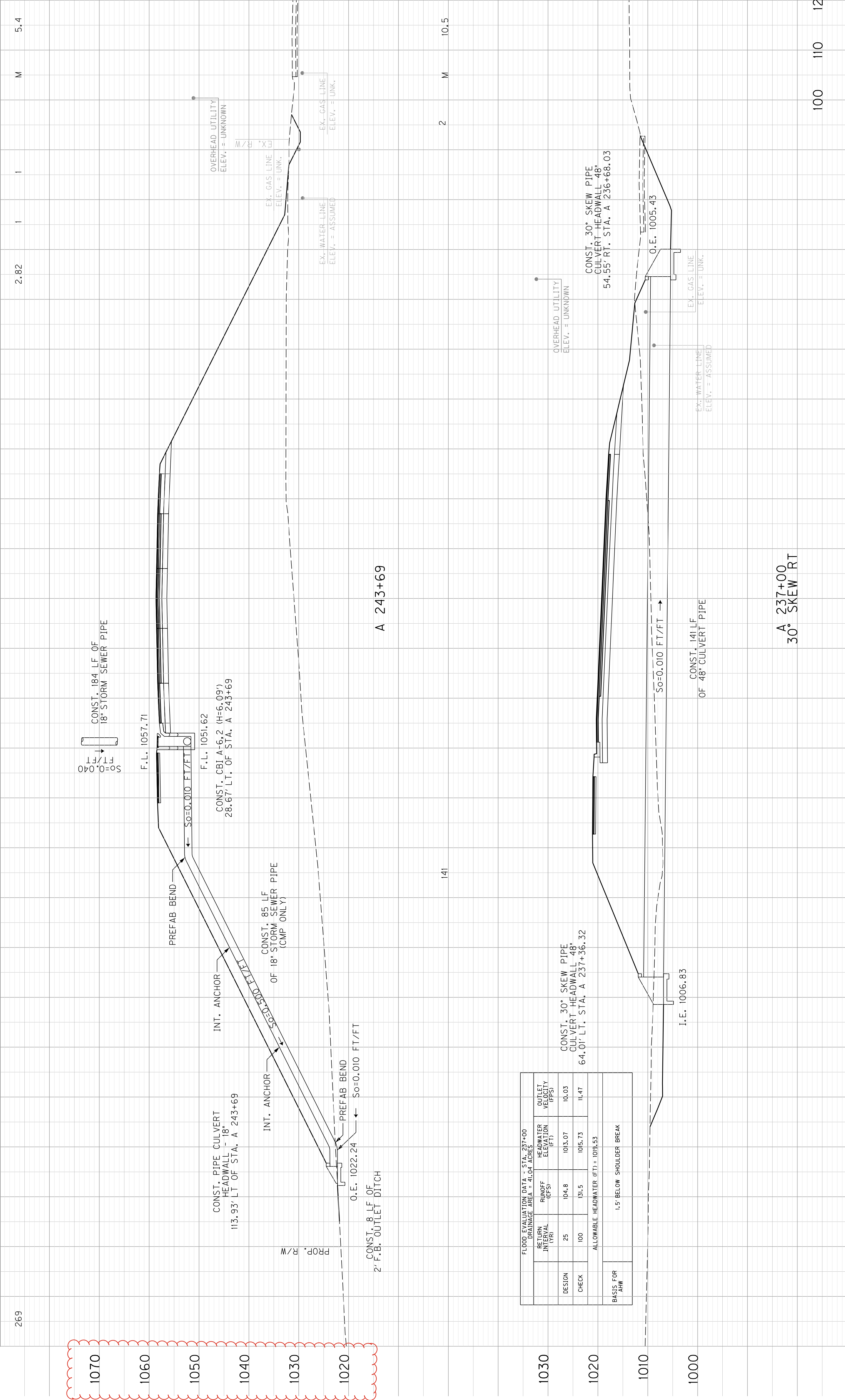


FLOOD EVALUATION DATA - STA. 237+00  
 DRAINAGE AREA = 41.04 ACRES

RETURN PERIOD (YR)	RUNOFF (GFS)	HEADWATER ELEVATION (FT)	OUTLET VELOCITY (FPS)
25	104.8	1033.07	10.03
100	131.5	1035.73	11.47

ALLOWABLE HEADWATER (FT) = 1018.53  
 1.5' BELOW SHOULDER BREAK

<b>PIPE DRAINAGE SHEET 36 of 51</b>									
<b>STORM SEWER PIPE</b>		<b>LI N E A R F E E T</b>		<b>CULVERT PIPE</b>					
18"					48"				
					LF				
CONC. CLASS A		CY		CONC. BOX INLET TYPE A		PIPE CULVERT HEADWALL -48"		PIPE CULVERT HEADWALL -18"	
2.82		1		EACH		EACH		EACH	
M		M		M		M		M	
5.4		5.4		5.4		5.4		5.4	
LF		LF		LF		LF		LF	

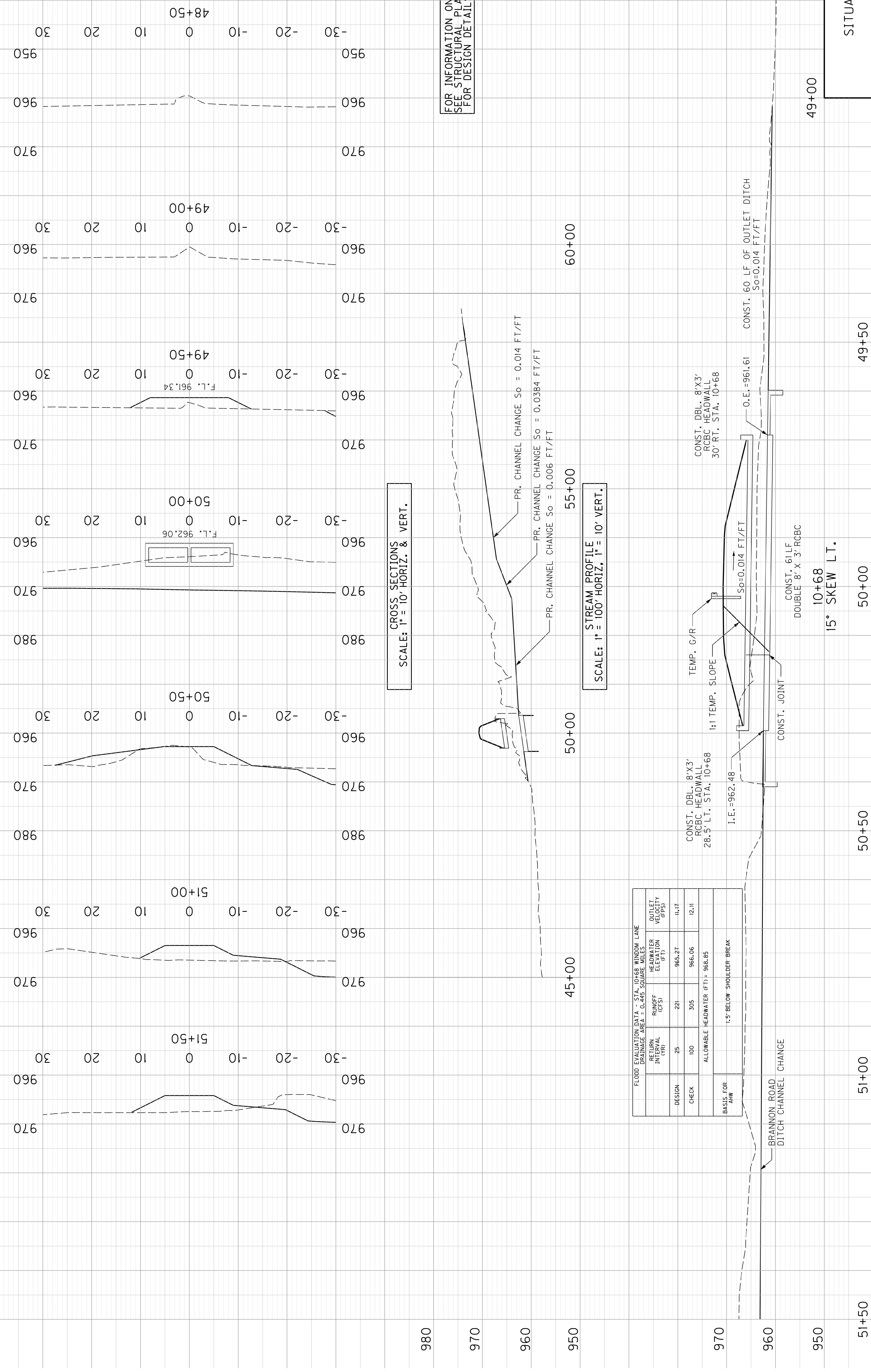


FLOOD EVALUATION DATA - STA. 237+00 DRAINAGE AREA = 41.04 ACRES				
RETURN PERIOD (YR)	RUNOFF (CFS)	HEADWATER ELEVATION (FT)	OUTLET VELOCITY (FPS)	OUTLET VELOCITY (FPS)
25	104.8	1033.07	10.03	10.03
100	131.5	1035.73	11.47	11.47
ALLOWABLE HEADWATER (FT) = 1018.53				
BASIS FOR AHW 1.5' BELOW SHOULDER BREAK				

PIPE DRAINAGE SHEET 49 of 51

STORM SEWER PIPE

L I N E A R F E E T

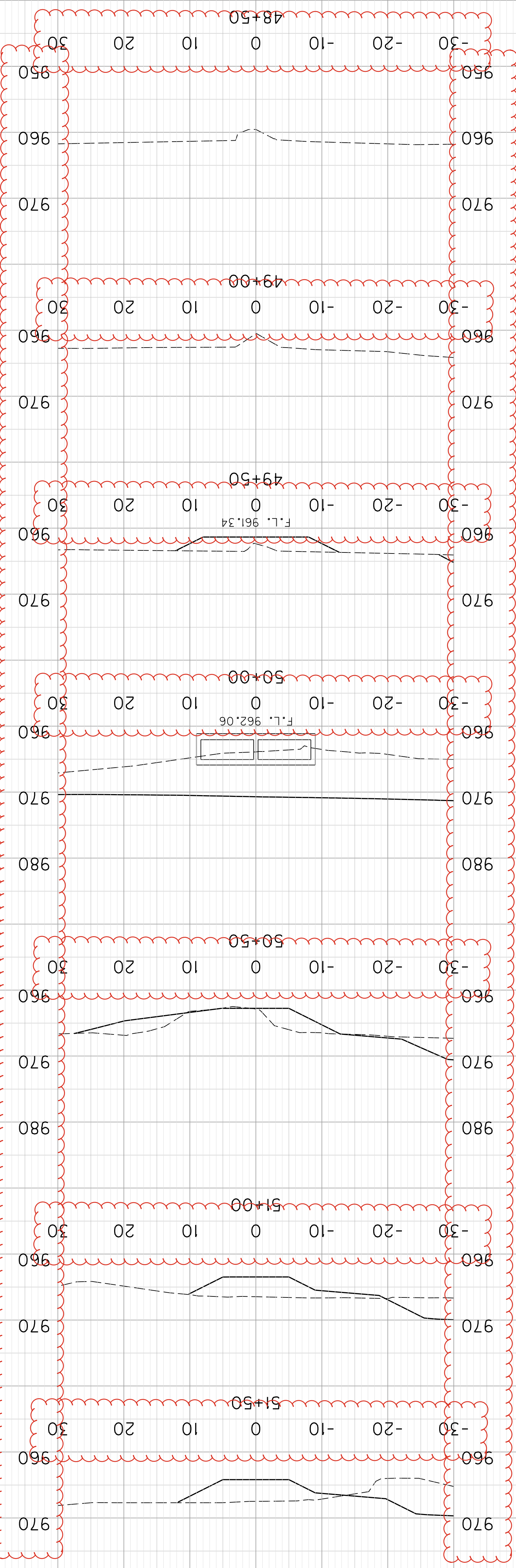


FLOOD EVALUATION DATA - STA. 10+68 WINDOW LANE			
DESIGN	RUNOFF INTERVAL (YR)	DRAINAGE AREA - 0.445 SQUARE MILES	OUTLET ELEVATION (FT)
DESIGN	25	221	965.27
CHECK	100	305	966.06
ALLOWABLE HEADWATER (FT) = 968.85			11.17
BASIS FOR AHW			12.11
1.5' BELOW SHOULDER BREAK			

PIPE DRAINAGE SHEET 49 of 51

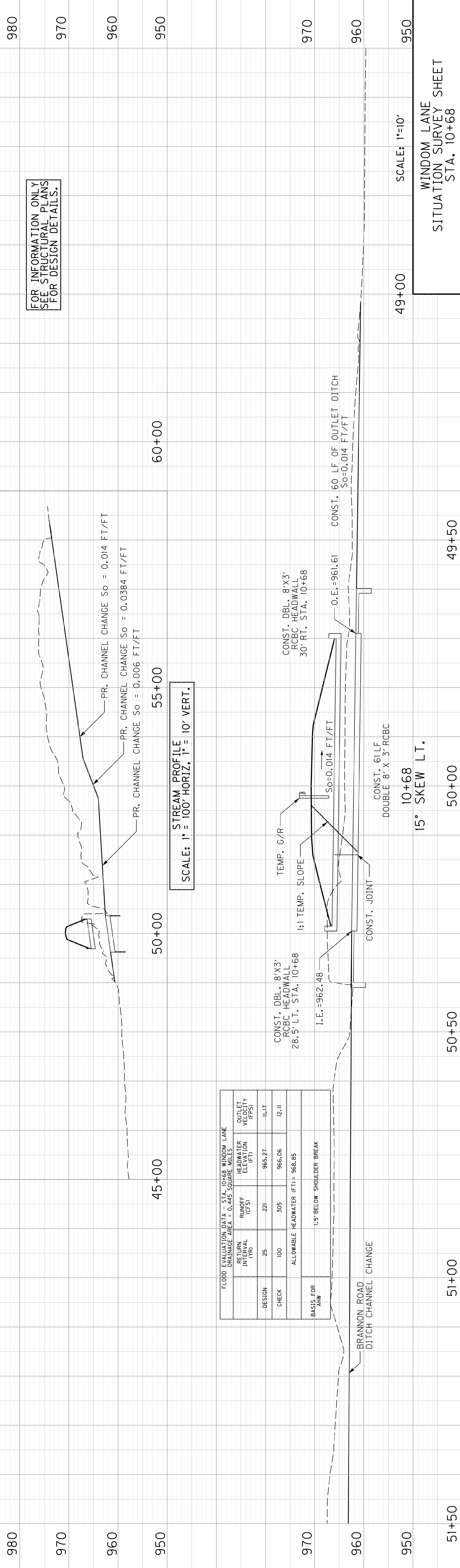
STORM SEWER PIPE

L I N E A R F E E T



CROSS SECTIONS  
SCALE: 1" = 10' HORIZ. & VERT.

FOR INFORMATION ONLY  
SEE STRUCTURAL PLANS  
FOR DESIGN DETAILS.



STREAM PROFILE  
SCALE: 1" = 100' HORIZ., 1" = 10' VERT.

FLOOD EVALUATION DATA - STA. 10+68 WINDOM LANE			
DESIGN	DRAINAGE AREA (SQ. FT)	ALLOWABLE HEADWATER (FT)	ALLOWABLE HEADWATER (FT) ±
DESIGN	25	100	966.85
CHECK	221	305	966.06
ALLOWABLE HEADWATER (FT) ± 966.85			
BASIS FOR AHW: 1.5' BELOW SHOULDER BREAK			